

# Beating Bowel Cancer

## Lifting the Lid in the East of England, April 2014



### Introduction

As part of the Lifting the Lid campaign, Beating Bowel Cancer wants to help you to lift the lid on the care and services in your area. We have collected information about the [Cancer Drugs Fund](#) and [Cancer Patient Experience Survey](#) for bowel cancer patients in your area for you to use, for example, by sharing it with your local health service or your MP to ask them what they will do to help lift the lid on bowel cancer in your area.

*The data used in this briefing are all publicly available. If you would like further information on this briefing, including how you could use it to campaign locally, please contact Stuart Barber on [stuart.barber@beatingbowelcancer.org](mailto:stuart.barber@beatingbowelcancer.org) or visit our website: [www.beatingbowelcancer.org](http://www.beatingbowelcancer.org).*

### About bowel cancer in your area

- In England in 2011, there were 34,044 new diagnoses for bowel cancer<sup>1</sup>
- Of these, 12% (4,074) were diagnosed in the East of England: 2,233 of these cases were in men and 1,841 were in women<sup>1</sup>

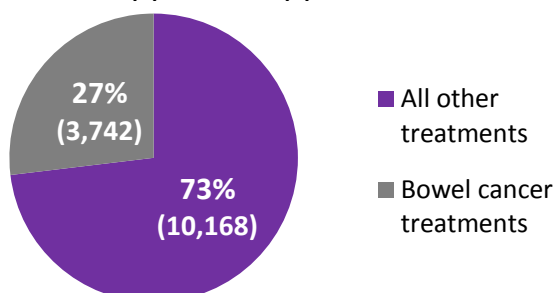
### Cancer Drugs Fund

Since 2010, the Cancer Drugs Fund (CDF) has meant that cancer patients have been able to get some cancer medicines that their doctors think they need but would not otherwise be available through the NHS. In 2013, the Government announced that the CDF would continue until 2016. So far, more than 44,000 patients have benefitted from the fund, and it is estimated that more than 10,000 of these are bowel cancer patients<sup>2</sup>.

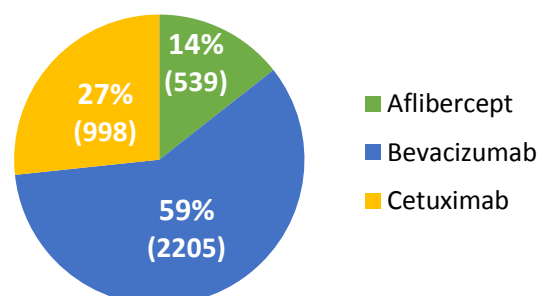
There is a list of cancer treatments that can be accessed through the CDF, and four of these are for bowel cancer. To find out more, you can access the full list [here](#)

- Between April and December 2013, there were 13,910 approved applications for all treatments available through the Cancer Drugs Fund<sup>3</sup>
- Of these, 3,742 were for bowel cancer treatments (Aflibercept, Bevacizumab and Cetuximab - however, no data is available yet for Panitumumab), making up just under a third of all notifications<sup>4</sup>
- Based on these figures, there were an estimated 1,099 approved applications for bowel cancer drugs in the Midlands and East which covers the East of England area

Cancer Drugs Fund total approved applications



Approved applications for bowel cancer treatments

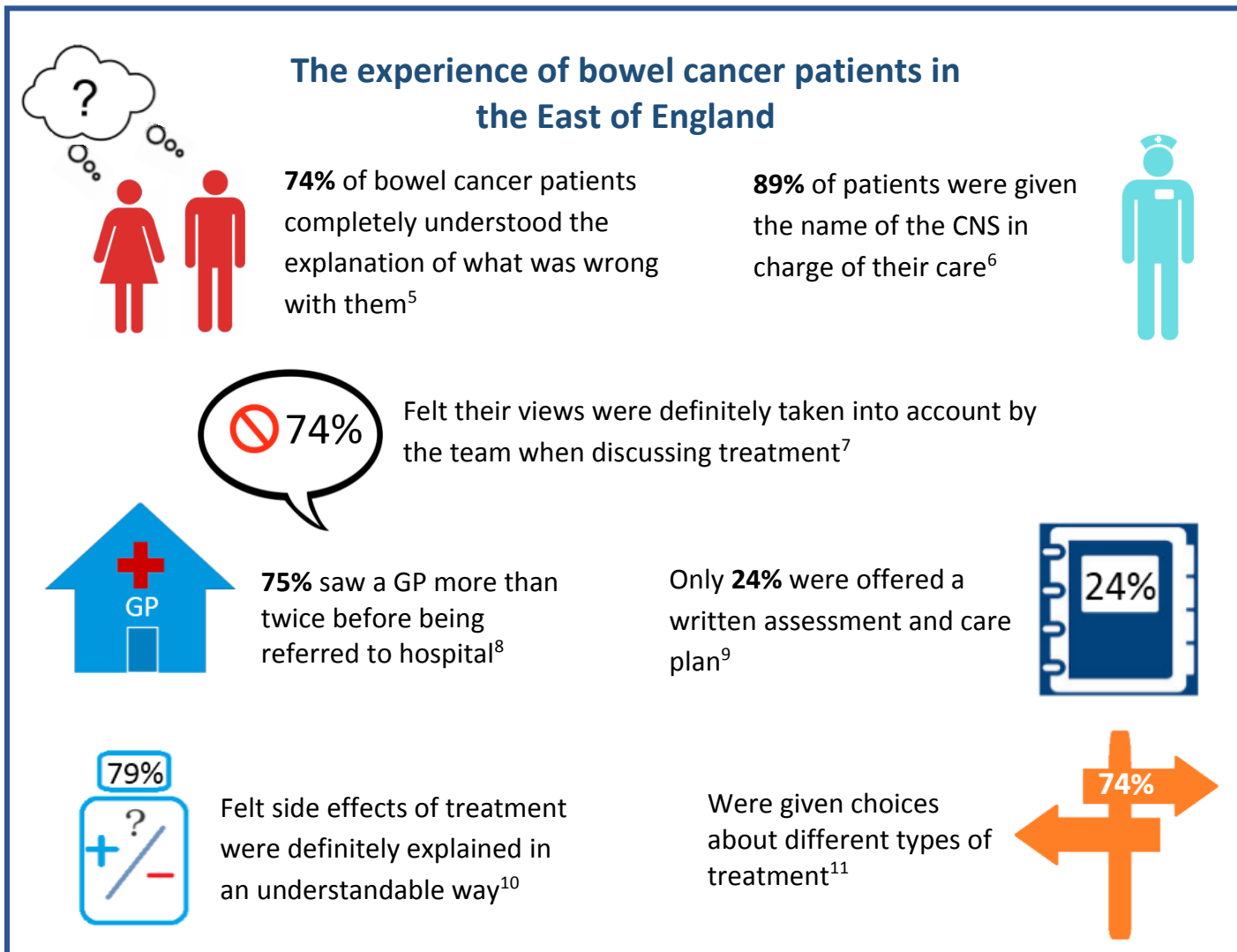


## Cancer Patient Experience

Beating Bowel Cancer believes all patients should have a good experience of care and we have developed a patient service pledge to help the NHS achieve this. The standards that all patients should expect include feeling informed about their cancer and treatment options and being able to be involved in and make their own decisions about their care.

Below we have identified some of the key markers of this from the National Cancer Patient Experience survey, which show how your local NHS is doing on this. You can also find about our Patient Service Pledge [here](#).

You can find more out about your local hospital results for the National Cancer Patient Experience survey [here](#).



<sup>1</sup> National Audit Office, *Cancer Registration Statistics, England 2011, 2013*

<sup>2</sup> *Hansard*, 13 February 2014, col. 1109

<sup>3</sup> NHS England, *Quarterly figures Report: April – January 2013/14*, 2014

<sup>4</sup> NHS England, *Quarterly figures Report: April – January 2013/14*, 2014

<sup>5</sup> NHS England, *National Cancer Patient Experience Survey*, 2013, Q13 p36

<sup>6</sup> NHS England, *National Cancer Patient Experience Survey*, 2013, Q21 p45

<sup>7</sup> NHS England, *National Cancer Patient Experience Survey*, 2013, Q16 p41

<sup>8</sup> NHS England, *National Cancer Patient Experience Survey*, 2013, Q1 p25

<sup>9</sup> NHS England, *National Cancer Patient Experience Survey*, 2013, Q68 p94

<sup>10</sup> NHS England, *National Cancer Patient Experience Survey*, 2013, Q17 p42

<sup>11</sup> NHS England, *National Cancer Patient Experience Survey*, 2013, Q15 p39